



May-it-be

WARA Autumn Rogaine

13 May 2017

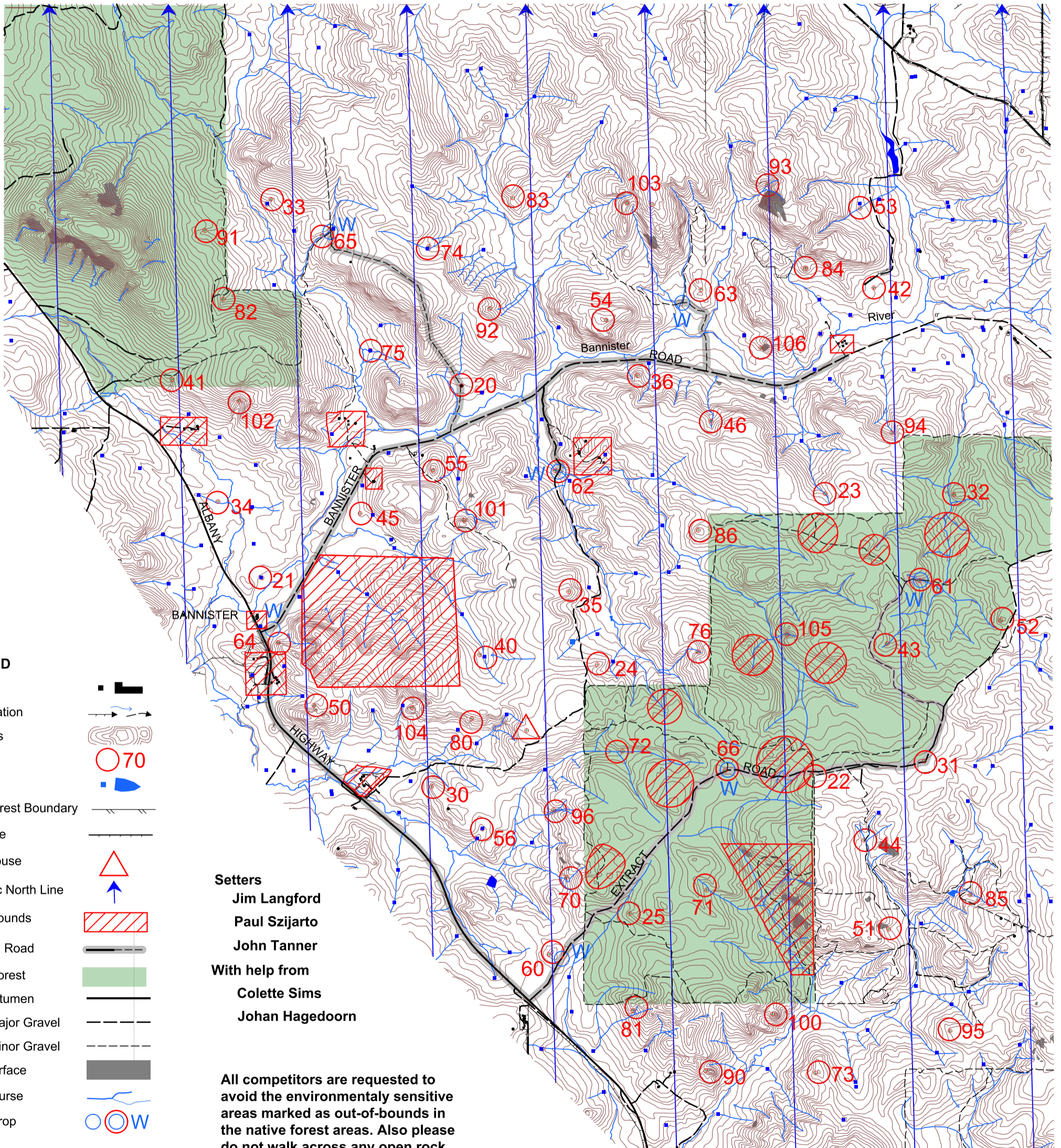
Emergency Contacts

Satellite Phone

+881 622 449 700

Admin Mobile

0411 101 952



LEGEND

- Building
- Continuation
- Contours
- Control
- Dam
- Farm/Forest Boundary
- Fenceline
- Hash House
- Magnetic North Line
- Out of Bounds
- Patrolled Road
- Native Forest
- Road, Bitumen
- Road, Major Gravel
- Road, Minor Gravel
- Rock Surface
- Watercourse
- Water Drop

Setters

- Jim Langford
 - Paul Szijarto
 - John Tanner
- With help from**
- Colette Sims
 - Johan Hagedoorn

All competitors are requested to avoid the environmentally sensitive areas marked as out-of-bounds in the native forest areas. Also please do not walk across any open rock surfaces whether marked or not.

We thank the following farmers for giving us access to their properties

- T Wessels
- D Wessels
- T Treasure
- R Chomley
- A Pollard
- A Webster
- J Winspear
- W Munday

Special thanks to Trevor Wessels for allowing use to have our Hash House on his property

SCALE 1:50,000, 5 metre contour interval



This map was produced using OpenOrienteering Mapper 0.5.96 by the Western Australian Rogaining Association, wa.rogainc.asn.au. Possession of this map does not give you right of access to this area.



Department of Sport and Recreation



PARKS AND WILDLIFE

May-it-be ... WARA 12 Hour Rogaine - 13 May 2017

Control Number	Description	Points
20	A Fence Corner	20
21	The Dam, South East Side	20
22	The Fence Corner	20
23	The Watercourse	20
24	The Spur	20
25	The Spur	20
30	A Knoll	30
31	The Track Bend	30
32	The Spur	30
33	The Gully	30
34	The Watercourse	30
35	The Spur	30
36	The Knoll	30
40	The Dam, North West corner	40
41	The Gully	40
42	A Windmill	40
43	The Watercourse	40
44	The Watercourse Junction	40
45	A Knoll	40
46	The Watercourse	40
50	The Spur	50
51	A Watercourse	50
52	The Knoll	50
53	The Watercourse	50
54	The Knoll, then 30m at 110 degrees	50
55	The Knoll	50
56	The Dam, Eastern side	50
60	The Knoll	60
61	The Track-Watercourse Crossing	60
62	The Track-Watercourse Crossing	60
63	The Saddle	60

Control Number	Description	Points
64	The Spur	60
65	The Watercourse	60
66	The Track Junction	60
70	The Watercourse	70
71	The Gully	70
72	The Watercourse Junction	70
73	The Knoll	70
74	The Dams, between	70
75	The Dam	70
76	The Watercourse	70
80	The Gully, Upper part	80
81	The Northern Watercourse	80
82	The Gully	80
83	A saddle	80
84	The Knoll	80
85	The Watercourse	80
86	The Knoll	80
90	The Knoll	90
91	The Gully	90
92	A Watercourse Junction	90
93	The Central Watercourse	90
94	A Watercourse Junction	90
95	The Spur	90
96	The Watercourse Junction	90
100	"Old Smokey" The Knoll	100
101	The Gully	100
102	The Gully	100
103	The Knoll	100
104	The Knoll	100
105	The Watercourse	100
106	A Watercourse	100

Important Information
<p>Pre-registration from 6:00pm Friday Maps and wrist tags issued from 7:00am Saturday A pre-event briefing will commence at 9:45am</p> <p>Event Starts 10:00am Saturday Event Finishes 10:00pm Saturday</p> <p>Hash House opens at 5:00pm Saturday Hash House closes at 8:30am Sunday</p> <p>Late Penalties applied: 10 points per minute or part minute Disqualification after 30 minutes late</p> <p>Sunset: 5:24pm Moonrise: 7:20pm</p> <p>Number of controls used: 62 Total points available: 3760</p> <p>If you believe a tagging device at a control is not working - Have all the team try again. If there is still a problem - record the 4 digit number on the control. Report the problem to Admin when you return.</p> <p>Your finish time is recorded when you tag off at one of the finish controls in front of Admin. You can tag off as many times as you wish. (It keeps your last time).</p>

If you need assistance or a lift back to Admin make your way to the nearest water drop or patrolled road. Patrol cars have a green flashing light.

Water drops are at or near controls 60, 61, 62, 63, 64, 65 and 66